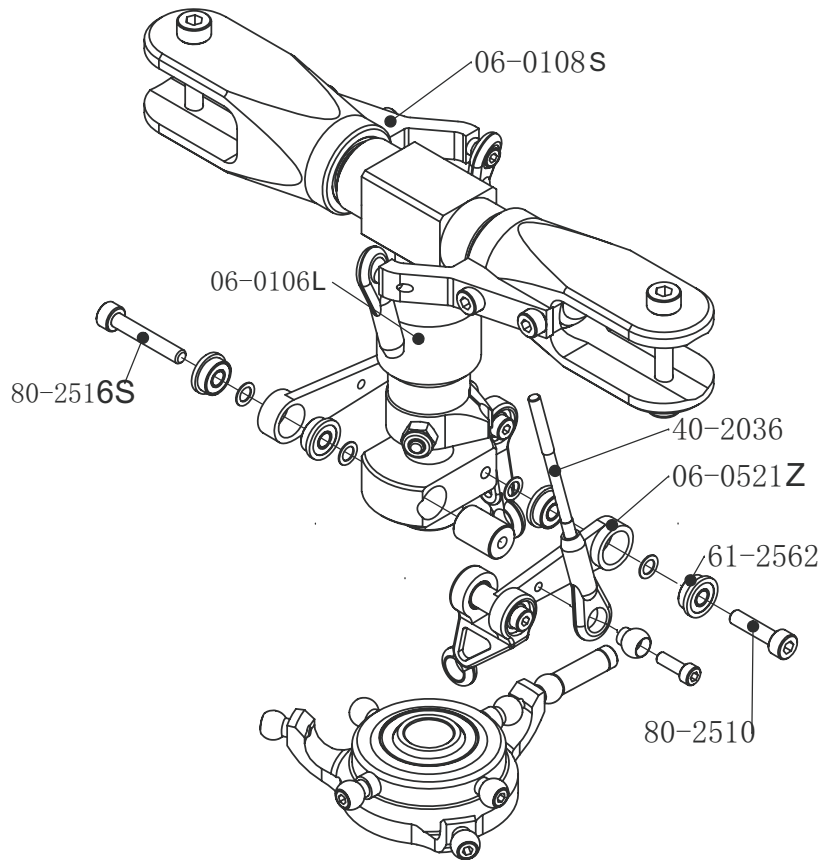
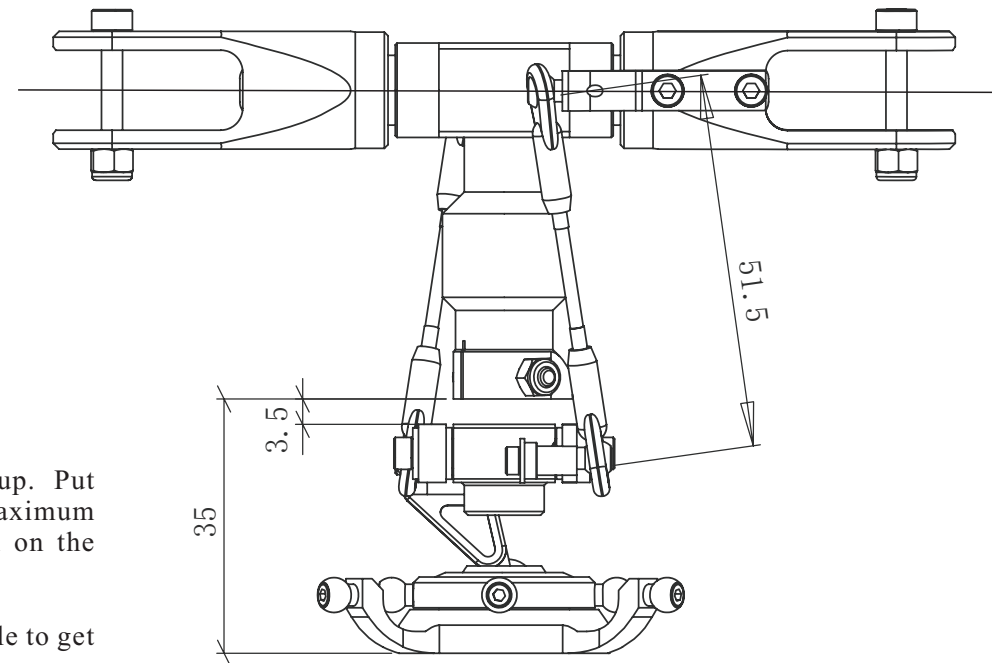


500 SIZE FL ROTOR INITIAL SETUP



Order NO.	Description	Remark
06-0108S	FL Main blade holder arm(500 metal)	1 set/bag
06-0521Z	FL Swash plate Driver arm(500 metal)	1 set/bag
80-2510	Cap Head Bolt M2.5x10	10 pcs/bag
06-0106L	FL Rotor hub set(500 metal)	1 set/bag
61-2562	Flanged Bearing 2.5x6x2.6	4 pcs/bag
80-2516S	Cap Head Bolt M2.5x16	10 pcs/bag
40-2036	FL Link Rod (500 metal)	1 set/bag



Drawing on the right shows 0 pitch position setup. Put transmitter sticks in middle position. To obtain maximum pitch range, please setup the rotor system as shown on the drawing. All sizes are in mm.

Note: swash driver arms have to be 90 deg to the spindle to get the right phasing.