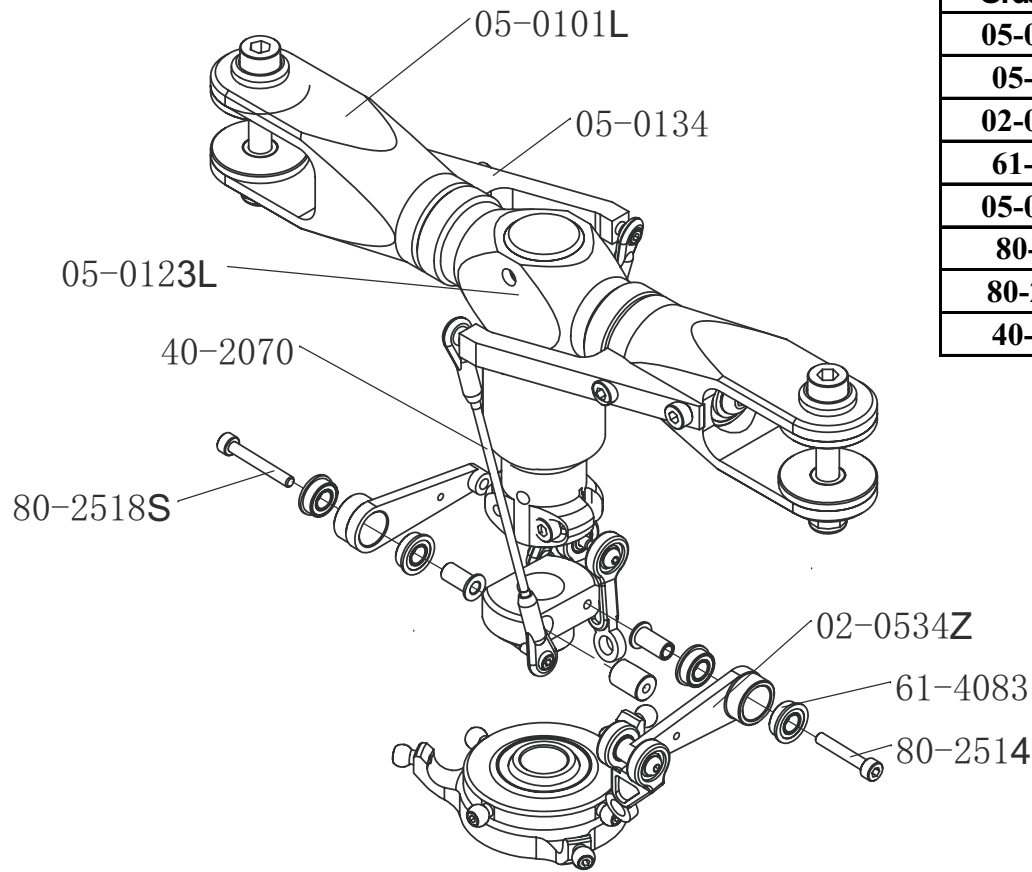
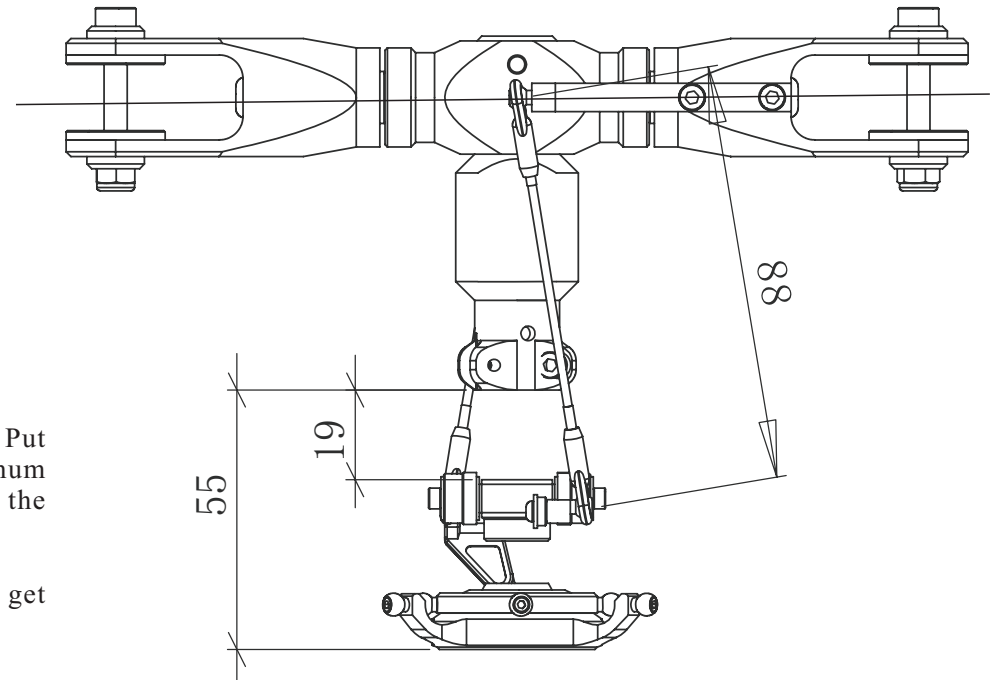


90 SIZE FL ROTOR INITIAL SETUP



| Order NO. | Description | Remark |
|-----------|--|------------|
| 05-0101L | FL Main blade holder set(90 metal) | 1 pcs/bag |
| 05-0134 | FL Blade holder arm (90 metal) | 1 set/bag |
| 02-0534Z | FL Swash plate Driver arm (50,90metal) | 1 set/bag |
| 61-4083 | Flanged bearing 4x8x3 | 4 pcs/bag |
| 05-0123L | FL Rotor hub set(90 metal) | 1 set/bag |
| 80-2514 | Cap Head Bolt M2.5x14 | 10 pcs/bag |
| 80-2518S | Cap Head Bolt M2.5x18 | 10 pcs/bag |
| 40-2070 | FL Link Rod (90 metal) | 1 set/bag |



Drawing on the right shows 0 pitch position setup. Put transmitter sticks in middle position. To obtain maximum pitch range, please setup the rotor system as shown on the drawing. All sizes are in mm.

Note: swash driver arms have to be 90 deg to the spindle to get the right phasing.